

Installing Nikon View 5 under Windows — Overview

When you insert the Nikon View 5 CD into the CD-ROM drive, the **Select Language** dialog box appears. After you have selected the desired language, the **Install Center** window will appear, allowing you to select either **Easy Install** or **Custom Install** as the method of installation.

Easy install

Easy Install installs the following software, in the order shown below.

- | | |
|--|--------------------|
| 1. Drivers for DI Series Cameras | 3. QuickTime 5.0.2 |
| 2. Coolpix Camera Drivers* ²
(all models except 990 and 880) | 4. Nikon View 5 |

Custom install

Custom Install allows you to select and install the desired software from the list below. The selected software will be installed in the order of display.

- | | |
|--|--------------------|
| 1. PTP Driver* ¹ | 5. QuickTime 5.0.2 |
| 2. Coolpix Camera Drivers* ²
(all models except 990 and 880) | 6. Nikon View 5 |
| 3. Drivers for COOLPIX880
and 990 | 7. Cumulus Plug-in |
| 4. Drivers for DI Series Cameras | |

*¹ Windows XP only *² Windows 98SE only

Existing Versions of Nikon View and Nikon Capture

If an older version of Nikon View, or a version of Nikon Capture 1.x is installed on your computer, it must be uninstalled before installing Nikon View 5.

Cameras that are not supported by Nikon View 5

Nikon View 5 does not support connection of COOLPIX950, 910, 900, 800, or 700 digital cameras. Nikon View 5 can however be used to view photographs taken with these cameras if the camera memory card is inserted into a digital camera that Nikon View 5 supports.

Windows XP Home Edition/Professional / Windows 2000 Professional

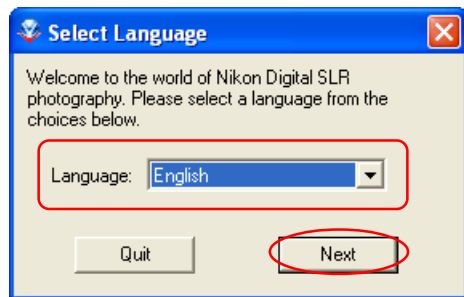
Log on as Computer Administrator when installing Nikon View 5 on Windows XP Home Edition/Professional or as Administrator when installing Nikon View 5 on Windows 2000 Professional.



Installing Nikon View 5 under Windows — Installation Instructions

i — Select a language

Select the language of your choice from the pull-down menu. After you select a language, click **Next** to display the **Install Center** window.



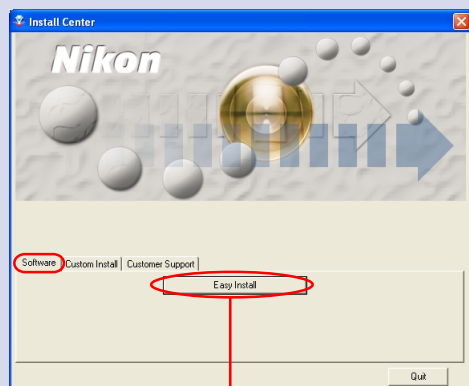
ii — Select Easy Install or Custom Install

The **Install Center** window contains three tabs: **Software**, **Custom Install**, and **Customer Support**.

The **Easy Install** button is in the **Software** tab. The **Custom Install** button is in the **Custom Install** Tab.

Click **Quit** if you want to close the **Install Center** window and cancel installation.

Software

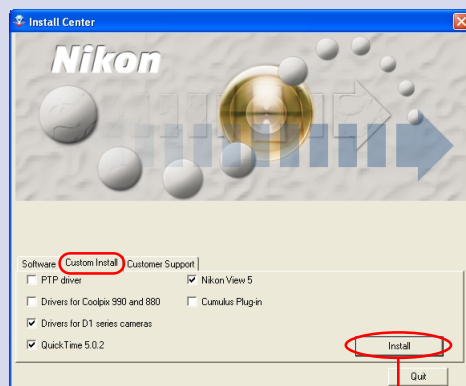


Easy Install button

Click this button to install the Coolpix Camera Drivers*¹ (all models except 990 and 880), Drivers for D1 Series Cameras, QuickTime 5.0.2 and Nikon View 5.

Click [here](#)  for Easy Install instructions

Custom Install

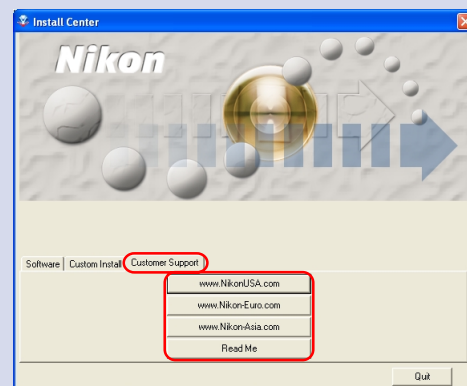


Custom Install button

The **Custom Install** tab gives you a choice of programs to install. Select the check box next to each of the programs you wish to use, then click **Install**.

Click [here](#)  for Custom Install instructions

Customer Support



Click the button for your area to view one of the Nikon technical support Web sites (your computer must be configured for connection to the Internet).

Click **Read Me** to open the Read Me file. Be sure to read it before installation.

*¹ Windows 98SE only



If the Install Center window does not appear

If the **Install Center** window does not appear when the CD-ROM is inserted in the drive:

1. Select **My Computer** from **Start** menu. (If you are using other than XP, double click the **My Computer** icon on the desktop.)
2. In the **My Computer** window, use the right mouse button to click on the icon for the CD-ROM drive containing the Nikon View 5 CD.
3. Select **AutoPlay** from the menu that appears.

